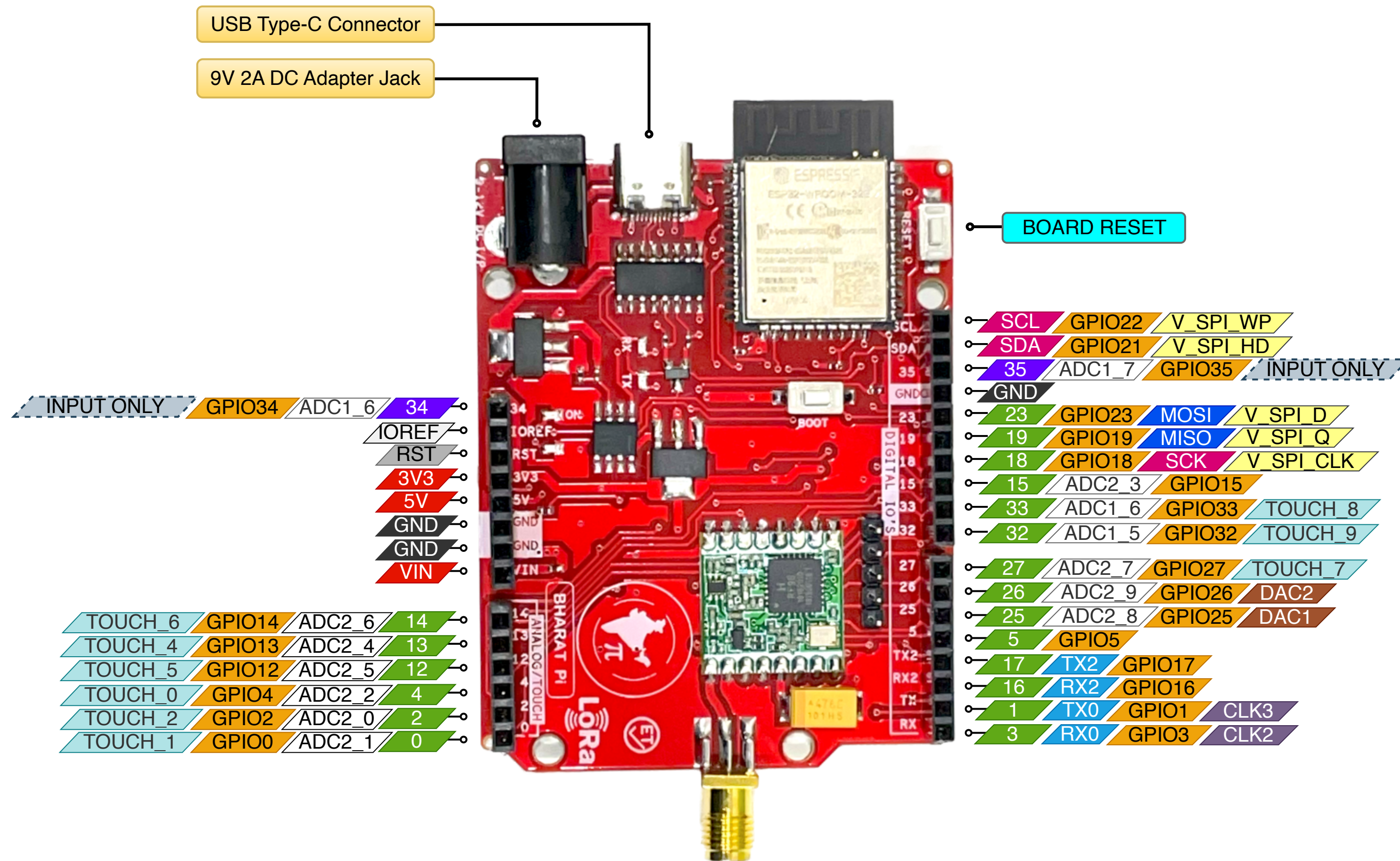


Scan to Download



# Bharat Pi LoRa Wi-Fi Pinout



### INPUT

USB Type-C  
9V 2A DC

### Programming IDE

- Arduino
- ESP-IDF
- Platform IO
- Micro Python



### Library for LoRa Access using Arduino IDE

Download this library for LoRa communication through the microcontroller.

<https://github.com/sandeepmistry/arduino-LoRa>

- 1 GPIO
- 2 ADC
- 3 ESP PINS
- 4 LED
- 5 Touch
- 6 VCC
- 7 INPUT ONLY PINS

www.bharatpi.net